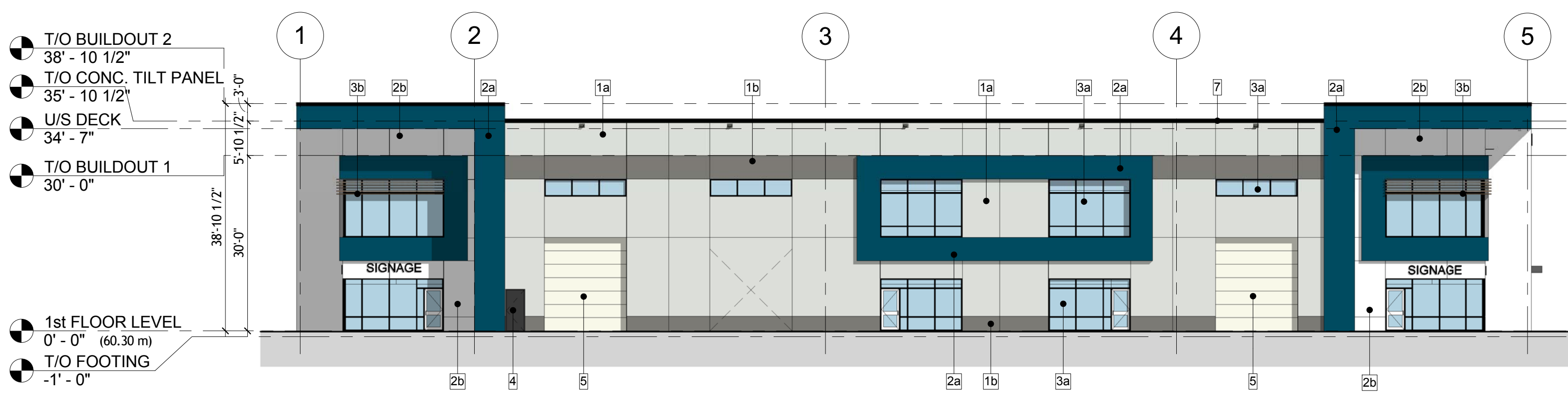
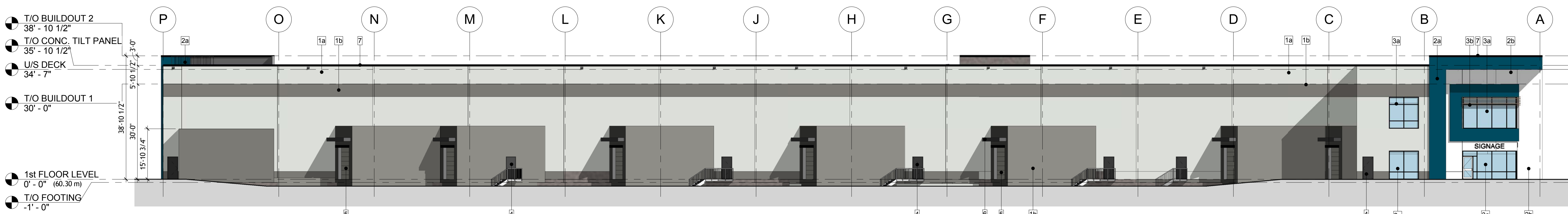


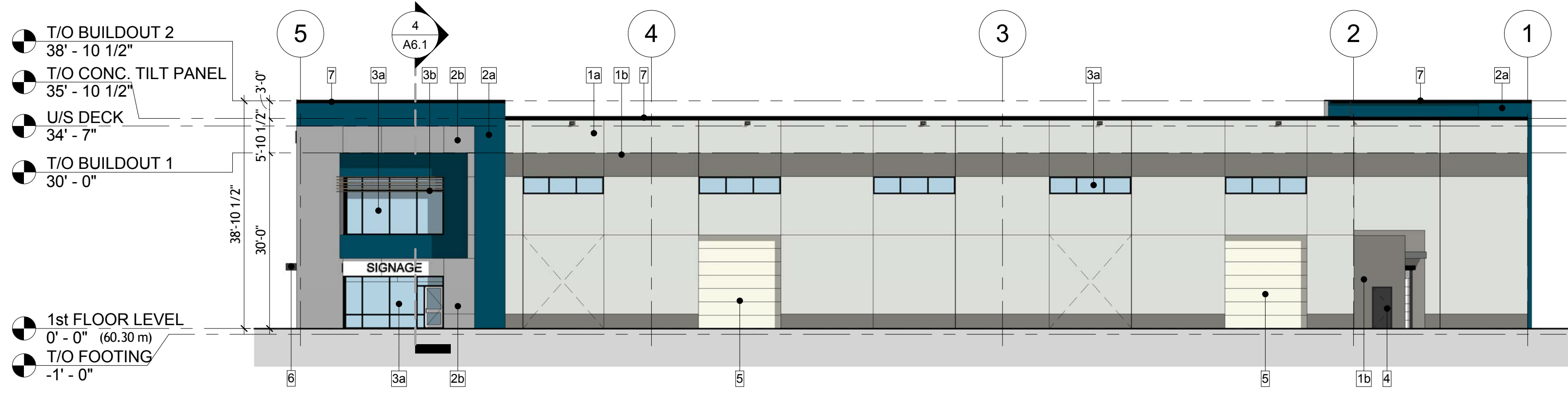
**SOUTH ELEVATION**  
1/16" = 1'-0"



**WEST ELEVATION**  
1/16" = 1'-0"



**NORTH ELEVATION**  
1/16" = 1'-0"



**EAST ELEVATION**  
1/16" = 1'-0"

**MATERIAL LEGEND**

1a	CONCRETE TILT-UP PANEL: COLOUR: 'CONVENTRY GRAY' HC 169
1b	CONCRETE TILT-UP PANEL: COLOUR: 'KENDALL CHARCOAL' HC 166
2a	COMPOSITE METAL WALL PANEL: AL13 ARCHITECTURAL PANEL SYSTEM COLOUR: 'ATLANTIC BLUE' SD346
2b	COMPOSITE METAL WALL PANEL: AL13 ARCHITECTURAL PANEL SYSTEM COLOUR: 'BRILLIANT WHITE' SD301
3	CURTAIN WALL: DBL. GLAZING MULLION COLOUR: 'BLACK'
3b	CURTAIN WALL SUN SHADE:
4	METAL DOOR & FRAME: COLOUR: 'IRON MOUNTAIN' 2134-30
5	OVERHEAD METAL SECTIONAL DOOR: COLOUR: 'IRON MOUNTAIN' 2134-30
6	STEEL CANOPY FRAME & DECK: COLOUR: 'IRON MOUNTAIN' 2134-30
7	PREFINISH METAL FLASHING: COLOUR: 'VICWEST QC 6072
8	EXPOSED CONCRETE CURB

**RE-ISSUED FOR CONSTRUCTION**



**KEYSTONE ARCHITECTURE**  
ARCHITECTURE & PLANNING LTD  
110 - 2881 Garden Street, Abbotsford, BC V2T 4X1  
Phone 604 850 0577 or 604 853 1528  
Email mail@keystonearch.ca | Web keystonearch.ca

**ISSUES & REVISIONS LIST**

No.	DESCRIPTION	DATE
1	ISSUED FOR DP	16-09-21
2	DP RESUBMISSION	17-03-30
3	ISSUED FOR COORDINATION	17-05-08
4	ISSUED FOR COORDINATION	17-06-29
5	ISSUED FOR COORDINATION	17-07-04
6	ISSUED FOR BUILDING PERMIT	17-07-13
7	ISSUED FOR FINAL REVIEW	17-08-17
8	ISSUED FOR BP RESUBMISSION	17-11-09
9	ISSUED FOR FINAL REVIEW	17-11-24
10	ISSUED FOR PRICING	17-12-21
11	ISSUED FOR FINAL COORDINATION	18-01-19
12	ISSUED FOR CONSTRUCTION	18-01-31
13	RE-ISSUED FOR CONSTRUCTION	18-02-05

Copyright Reserved. This plan and design is and at all times remains the exclusive copyright of Keystone Architecture & Planning Ltd and cannot be used without the architect's consent.  
The contractor shall check and verify all dimensions and report errors and omissions to the architect. This drawing is not to be used for construction purposes unless approved for construction.  
These design documents are prepared solely for use by the party with whom the design professionals entered into a contract and no representation of any kind is made by the design professionals to any party with whom the design professional has not entered into a contract.

**PROJECT**  
**INDUSTRIAL WAREHOUSE**  
2034 TOWNLINE ROAD,  
ABBOTSFORD, BC  
**SHEET TITLE**  
EXTERIOR ELEVATIONS

Job No.: 16-112	DRAWING NO.
Scale: AS NOTED	<b>A5.0</b>
Start Date: 16-06-01	
Drawn: AV	